



# INDOFINE Chemical Company, Inc.

121 Stryker Lane, Bldg. 30, Suite 1 • Hillsborough, NJ 08844 • U.S.A.

Phone: (908) 359-6778 • FAX: (908) 359-1179

website: [www.indofinechemical.com](http://www.indofinechemical.com)

e-mail: [chemical@indofinechemical.com](mailto:chemical@indofinechemical.com)

## CERTIFICATE OF ANALYSIS

Catalog Number: BIO-1009

Product Name: ZEARALENONE

CAS Number: [17924-92-4]

Lot Number: 2211731

Chemical Formula: C<sub>18</sub>H<sub>22</sub>O<sub>5</sub>

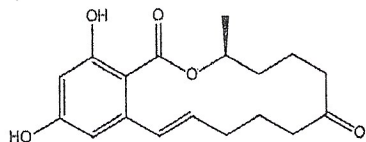
Molecular Weight: 318.36

Appearance: Off-white powder

Loss on drying: 2.1%

Storage: Store at -20°C

Purity(HPLC): 98.87%



Prepared by:  
*Ramesh Mandadi*  
Ramesh Mandadi  
Director of Operations

Reviewed and Approved by:  
*Sujata Moton*  
Sujata Moton  
VP



# INDOFINE Chemical Company, Inc.

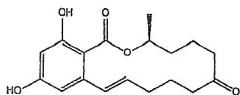
121 Stryker Lane, Bldg. 30, Suite 1 • Hillsborough, NJ 08844 • U.S.A.

Phone: (908) 359-6778 • FAX: (908) 359-1179

website: [www.indofinechemical.com](http://www.indofinechemical.com)

e-mail: [chemical@indofinechemical.com](mailto:chemical@indofinechemical.com)

## HPLC ANALYSIS



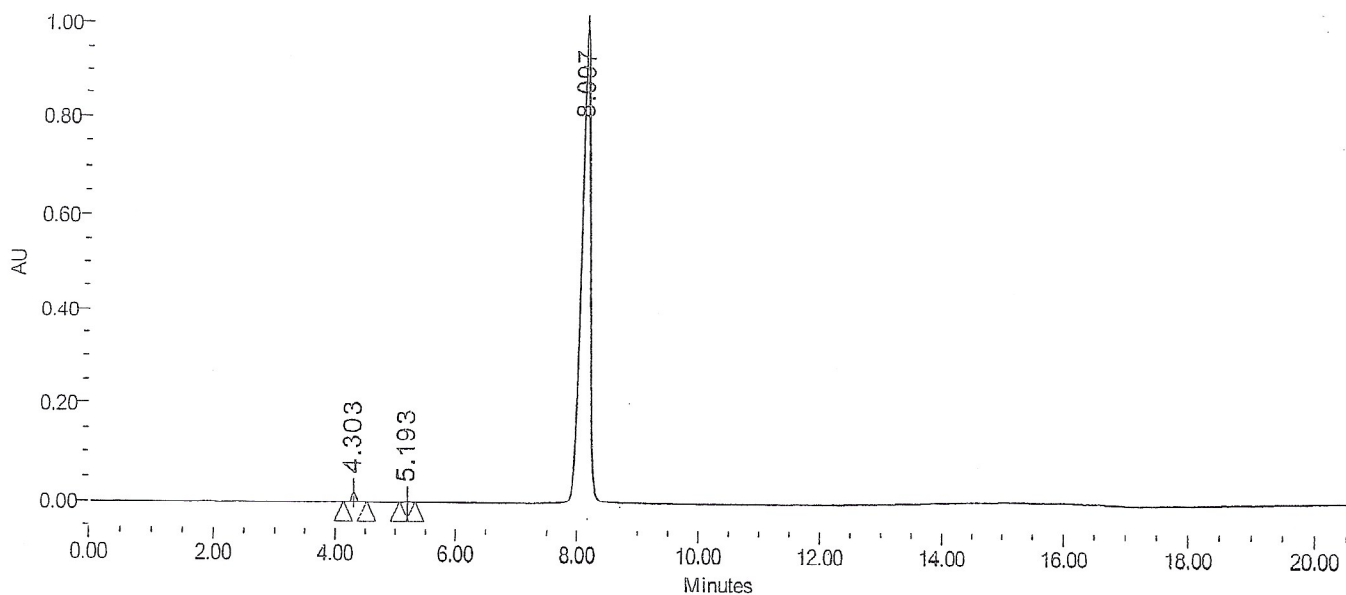
Catalog No.: BIO-1009  
Product Name: Zearalenone  
Lot No.: 2211731

### SAMPLE INFORMATION

Sample Name: Zearalenone  
Sample Type: Unknown  
Vial: 34  
Injection #: 1  
Injection Volume: 10.00 ul  
Run Time: 30.0 Minutes

Acquired By:  
Sample Set Name  
Acq. Method Set: Zearalenone  
Processing Method: sample  
Channel Name: PDA Ch1 238nm@4.8nm  
Proc. Chnl. Descr.: PDA Ch1 238nm@4.8nm

Auto-Scaled Chromatogram



Peak Results

	Name	RT	Area	% Area	Height (μV)	USP Plate Count	USP Resolution
1		4.303	105891	1.06	18880		
2		5.193	7244	0.07	1169		
3		8.097	9857466	98.87	994626		